

MIDDLE CREEK VILLAGE AT STAGECOACH - FINAL P.U.D. PLAN

A REPLAT AND RESUBDIVISION OF No. 15 MULTI-FAMILY, MEADOWGREEN AT STAGECOACH
 LOCATED IN PORTIONS OF LOT 7, SECTION 1, T3N, R85W OF THE 6th P.M.,
 ROUTT COUNTY, COLORADO

BLUING ENGINE LINE TABLE

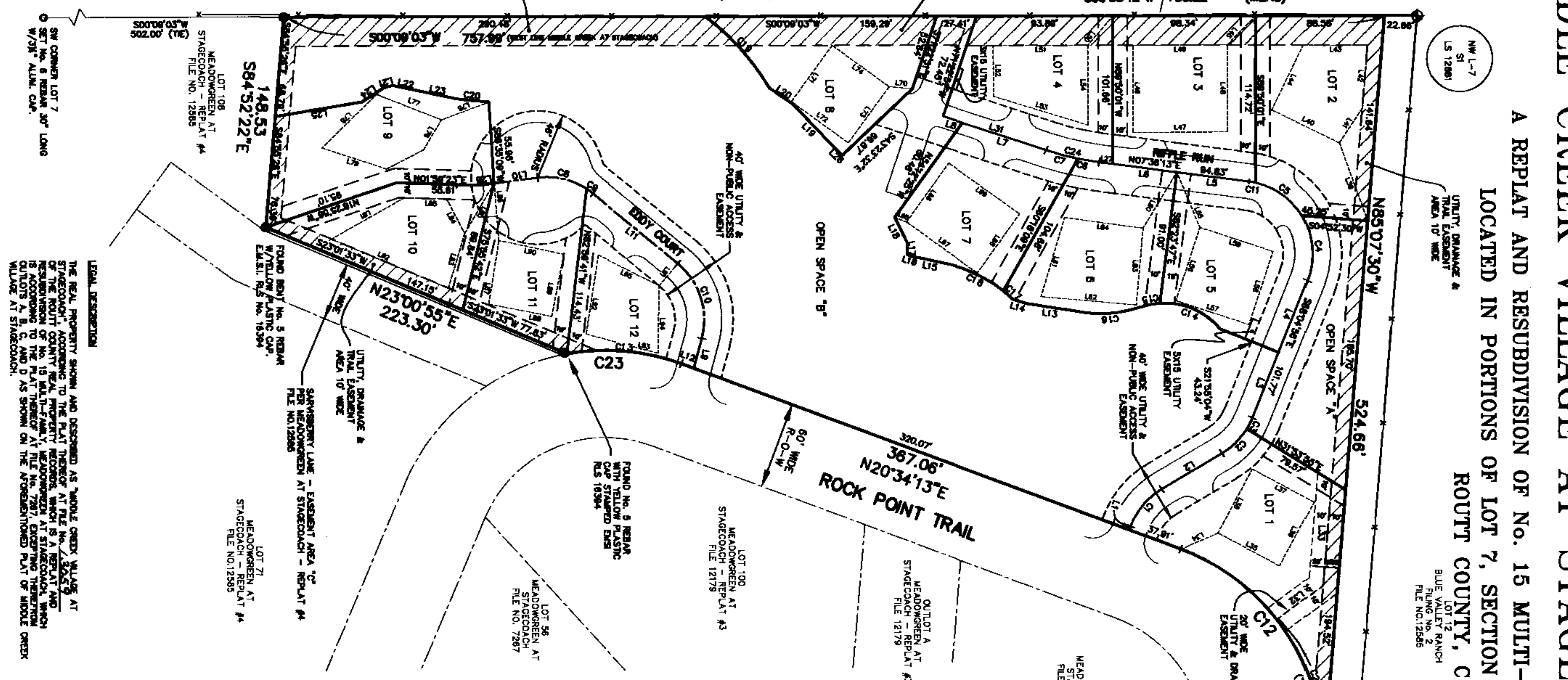
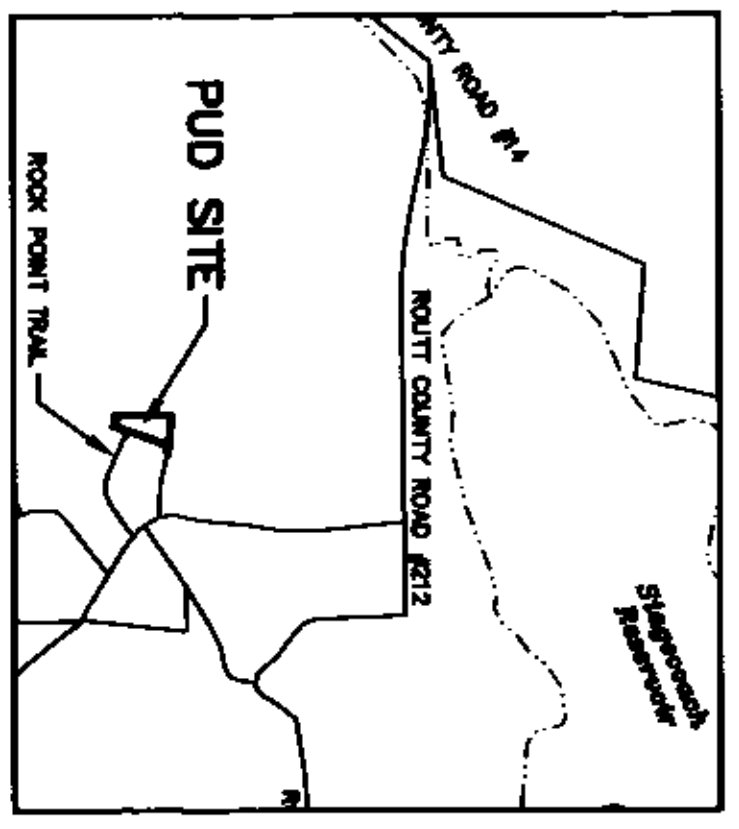
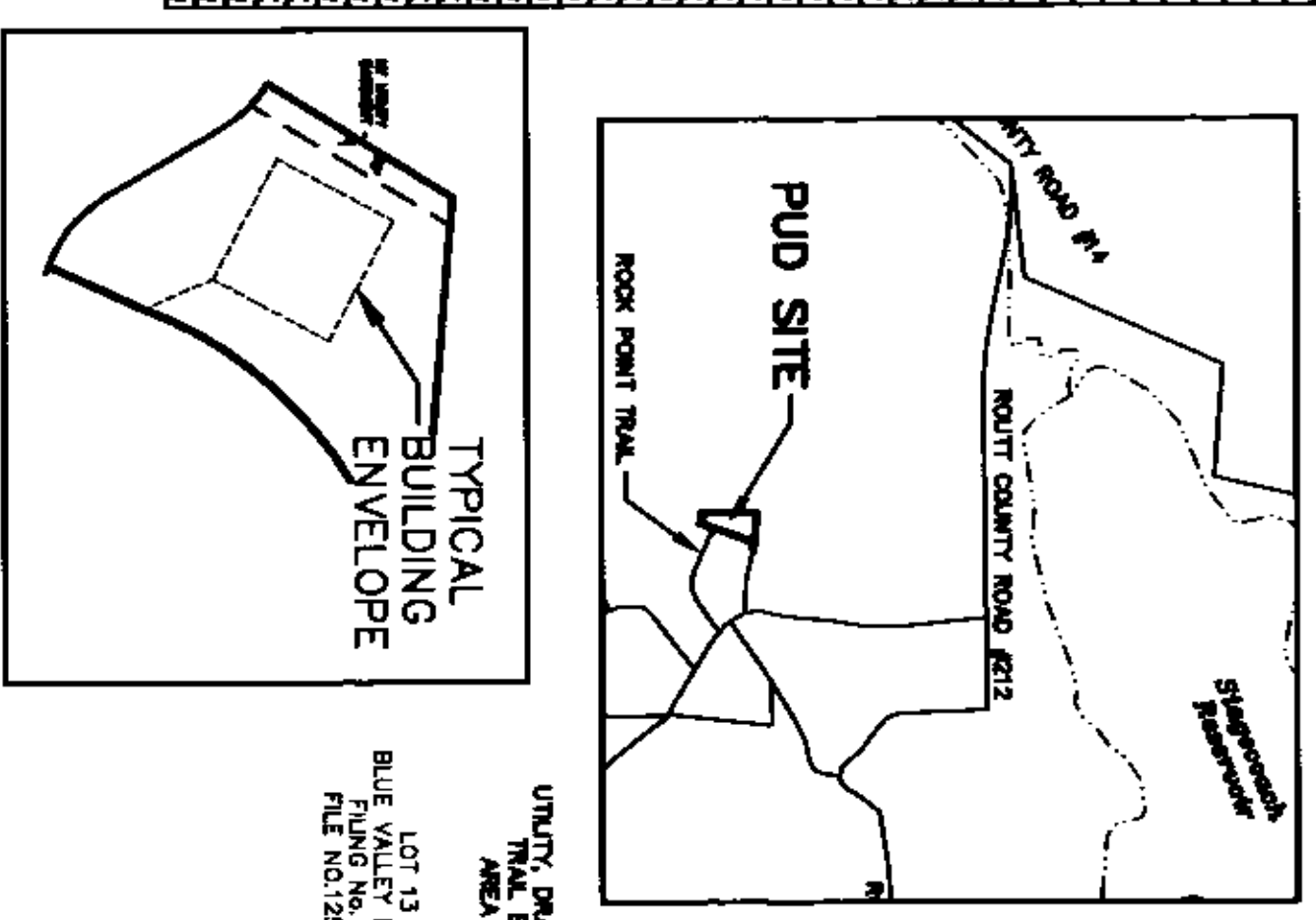
LINE	LENGTH	BEARING
L1	2.82	N82°28'47"W
L2	48.24	N82°28'47"W
L3	48.24	N82°28'47"W
L4	48.24	N82°28'47"W
L5	48.24	N82°28'47"W
L6	48.24	N82°28'47"W
L7	48.24	N82°28'47"W
L8	48.24	N82°28'47"W
L9	48.24	N82°28'47"W
L10	48.24	N82°28'47"W
L11	48.24	N82°28'47"W
L12	48.24	N82°28'47"W
L13	48.24	N82°28'47"W
L14	48.24	N82°28'47"W
L15	48.24	N82°28'47"W
L16	48.24	N82°28'47"W
L17	48.24	N82°28'47"W
L18	48.24	N82°28'47"W
L19	48.24	N82°28'47"W
L20	48.24	N82°28'47"W
L21	48.24	N82°28'47"W
L22	48.24	N82°28'47"W
L23	48.24	N82°28'47"W
L24	48.24	N82°28'47"W
L25	48.24	N82°28'47"W
L26	48.24	N82°28'47"W
L27	48.24	N82°28'47"W
L28	48.24	N82°28'47"W
L29	48.24	N82°28'47"W
L30	48.24	N82°28'47"W

BLUING ENGINE LINE TABLE

LINE	LENGTH	BEARING
L31	48.24	N82°28'47"W
L32	48.24	N82°28'47"W
L33	48.24	N82°28'47"W
L34	48.24	N82°28'47"W
L35	48.24	N82°28'47"W
L36	48.24	N82°28'47"W
L37	48.24	N82°28'47"W
L38	48.24	N82°28'47"W
L39	48.24	N82°28'47"W
L40	48.24	N82°28'47"W
L41	48.24	N82°28'47"W
L42	48.24	N82°28'47"W
L43	48.24	N82°28'47"W
L44	48.24	N82°28'47"W
L45	48.24	N82°28'47"W
L46	48.24	N82°28'47"W
L47	48.24	N82°28'47"W
L48	48.24	N82°28'47"W
L49	48.24	N82°28'47"W
L50	48.24	N82°28'47"W
L51	48.24	N82°28'47"W
L52	48.24	N82°28'47"W
L53	48.24	N82°28'47"W
L54	48.24	N82°28'47"W
L55	48.24	N82°28'47"W
L56	48.24	N82°28'47"W
L57	48.24	N82°28'47"W
L58	48.24	N82°28'47"W
L59	48.24	N82°28'47"W
L60	48.24	N82°28'47"W
L61	48.24	N82°28'47"W
L62	48.24	N82°28'47"W
L63	48.24	N82°28'47"W
L64	48.24	N82°28'47"W
L65	48.24	N82°28'47"W
L66	48.24	N82°28'47"W
L67	48.24	N82°28'47"W
L68	48.24	N82°28'47"W
L69	48.24	N82°28'47"W
L70	48.24	N82°28'47"W

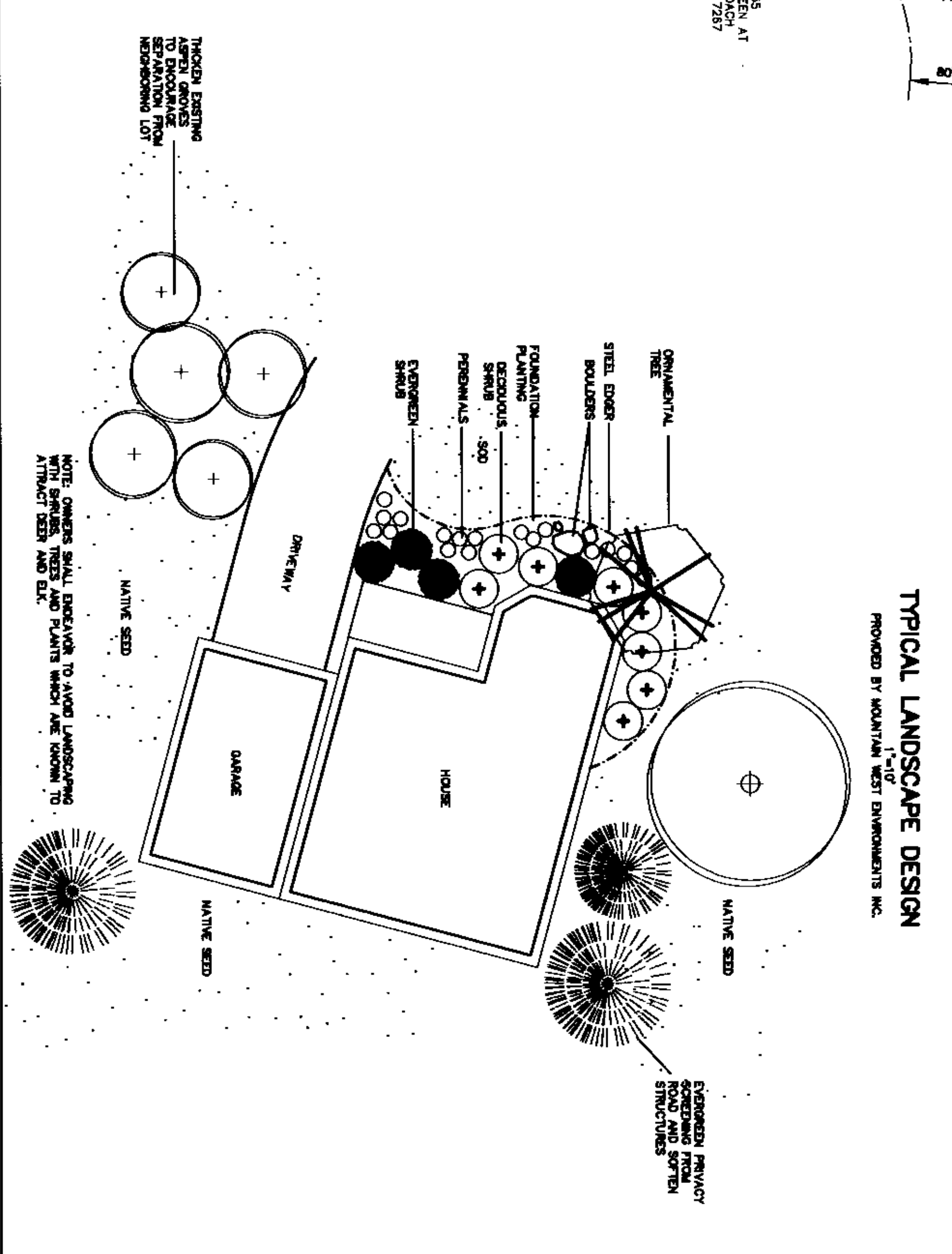
CLARK TABLE

CLARK	LENGTH	BEARING
C1	34.50	S70°28'47"W
C2	34.50	S70°28'47"W
C3	34.50	S70°28'47"W
C4	34.50	S70°28'47"W
C5	34.50	S70°28'47"W
C6	34.50	S70°28'47"W
C7	34.50	S70°28'47"W
C8	34.50	S70°28'47"W
C9	34.50	S70°28'47"W
C10	34.50	S70°28'47"W
C11	34.50	S70°28'47"W
C12	34.50	S70°28'47"W
C13	34.50	S70°28'47"W
C14	34.50	S70°28'47"W
C15	34.50	S70°28'47"W
C16	34.50	S70°28'47"W
C17	34.50	S70°28'47"W
C18	34.50	S70°28'47"W
C19	34.50	S70°28'47"W
C20	34.50	S70°28'47"W
C21	34.50	S70°28'47"W
C22	34.50	S70°28'47"W
C23	34.50	S70°28'47"W



LOT AREA SUMMARY

LOT #	Area (Sq. Ft.)	Area (Acres)
LOT 1	12,884	0.29
LOT 2	11,014	0.25
LOT 3	10,830	0.24
LOT 4	9,398	0.22
LOT 5	9,346	0.21
LOT 6	8,027	0.21
LOT 7	8,360	0.19
LOT 8	8,445	0.19
LOT 9	9,831	0.23
LOT 10	7,508	0.17
LOT 11	7,353	0.17
LOT 12	7,280	0.17
OPEN SPACE "A"	8,842	0.20
OPEN SPACE "B"	91,846	2.10



LEGAL DESCRIPTION
 THE REAL PROPERTY SHOWN AND DESCRIBED AS "MIDDLE CREEK VILLAGE AT STAGECOACH" IS A REPLAT AND RESUBDIVISION OF THE REAL PROPERTY KNOWN AS "MEADOWGREEN AT STAGECOACH" WHICH IS ACCORDING TO THE 15th JUNE 1997, RECORDED IN THE PUBLIC RECORDS OF ROUTT COUNTY, COLORADO, AS SHOWN ON THE APPROVED FINAL P.U.D. PLAN AT STAGECOACH.

SEAL
 COUNTY OF ROUTT
 COLORADO

By: *[Signature]*
 County Clerk, Routt County, Colorado

By: *[Signature]*
 County Clerk, Routt County, Colorado

MIDDLE CREEK VILLAGE AT STAGECOACH - FINAL P.U.D.

Johnson, Kunkel & Associates, Inc.
 LAND SURVEYING MAPPING CIVIL ENGINEERING

PHONE: 970-328-6368
 FAX: 328-1035

EAGLE 970-879-4676
 STEAMBOAT SPRINGS 970-879-4676

P.O. Box 408 1288 Chambers Ave. Eagle, Colorado 81631
 P.O. Box 771196 1120 S Lincoln Ave #202 Steamboat Spgs. CO 80477

GRAPHIC SCALE
 (IN FEET)
 1 inch = 80 ft.

NO.	DATE	REVISION	BY
2	10/22/01	COUNTY AND ATTORNEYS COMMENTS	JMU
1	7/26/01	UTILITY EASEMENT LOTS 5 & 6	JMU

NOTE: IF INSET IS LESS THAN 24"x36", REDUCED PRINT, USE GRAPHIC SCALE